

HART SCHOOL

1923 - 1941



WORKING BEE OF PARENTS AT THE NEW HART SCHOOL (1923)
HE & HW Zweck's drays are to the left [Source: Ian Roberts]



SHELTER SHED AT THE SECOND HART SCHOOL
[Source: Pittman family]



HART SIDING WITH WHEAT STACKS AND RAIL CARS
[Source: Pittman family]



RAILWAY WORKERS CAMP AT HART (circa 1925)

This row of tents along the railway line south of Hart provided accommodation for the mainly Maltese workers during the installation of the broad gauge line. [Source: Brinkworth Museum]

The first Hart School opened in the Hart Hall in 1895 when 28 children from local farming families were enrolled. The hall and the former Stow Memorial Presbyterian Church can be seen at 212 Hart Church Road.

On 22 January 1923 education commenced on this site when the teacher Mr Gilbert Cain and children transferred from the Hart Hall. The population had become centred around the adjacent Hart Railway Siding and a new and larger school was needed.

The new school was opened by the Education Department on Section 485W on land donated by Mrs HE Zweck. The solid stone building was erected by Mr Fred Haupt, the stone material being sourced from a quarry on HE Zweck's property.

Parents helped with maintenance of the school and grounds and built a playground. Teachers generally boarded with local families and became involved in the local community. In the late 1930s and early 1940s, the central railway cottage was used as a permanent residence for the school master.

One teacher, Mr Frank Brown, came from England to work for the Education Department for two years until ill health forced his return to his home in Dorset. He taught at Hart for just over a year and was particularly interested in art, lawn tennis and soccer. At the time of his death in 1927 he was remembered as a highly popular school teacher who had obtained excellent results and was most progressive in his ideas.

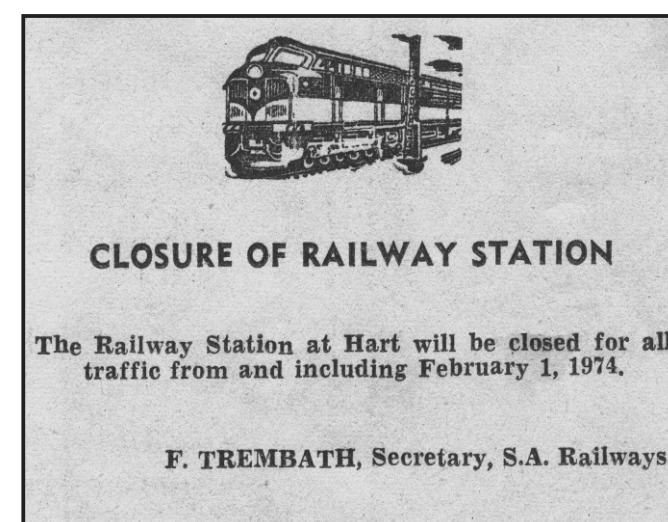
To attend school each day, children generally made their own way – walking, riding horses or driving carts, often on wet and muddy tracks. Hart had a community water trough, originally there for the school children's ponies.

More than 400 children were educated over the 46 years of schooling provided in the Hart district from 1895 to 1941. Two of these to reach prominence were parliamentarian Sir Alexander Lyell McEwin and Olympic cyclist Jim Nestor.

Schooling in Hart ceased in December 1941. In 1956 the disused school building became the Hart tennis clubrooms. It has since passed into private hands.



INSTALLATION OF THE NEW SEE-SAW AT HART SCHOOL (CIRCA 1930)
[Source: Brinkworth Museum]



TEACHERS AT THE SECOND HART SCHOOL	
GILBERT KG CAIN	Jan -Apr 1924
FRANK BROWN	1924 - 1925
THEODOR B LUESTNER	1925 - 1930
FRANK H THOMPSON	1931 - 1933
VICTOR F SCHULZ	1934 - 1940
THOMAS V PARTRIDGE	1941 - 1942
SCHOOL CLOSED	26 Jan 1942



HART SCHOOL, 1925

Back (from left): Wilfred Palmer, Phillip Siviour, Keith Zweck, Max Fuller, Oscar Gursansky, Gus Wendland, Rita Ashton, Melva Hentschke
Centre: Ron Fuller, Gordon Mannix, Doreen Morrison, Ethel Siviour, Frieda Mannix, Iris Wendland, Gwen Ashton, Gwen Siviour, Peace Wendland, Kathleen Wehrman
Front: Roy Ashton, James Nestor, Roy Hentschke, Clem Eckermann, Ralph Zweck, Teacher Theo Luestner.
[Source: Brinkworth Museum]



STUDENTS AT HART SCHOOL (1933)

Back (from left): Ray Eckermann, Jack Pittman, Walter Zweck, Murray Zweck, Alan Wooldridge, Dulcie Fuller, Valda Hentschke, Eric Smith, Harold Eckermann, Ken Hentschke, Rex Wendland, Lawrence Zweck
Centre: Clarrie Eckermann, Cynthia McEwin, Jessie Morrison, Brian Pittman
Front: Alex McEwin, (unknown boy), possibly Elliott boy, Billy Dick, Esma Hancock, Joy Cross, Pat Wendland, Stanley (Bob) Hentschke, Ron Wooldridge, Ruth Hentschke, June Mattner, Colin Hentschke
[Source: LR Zweck]

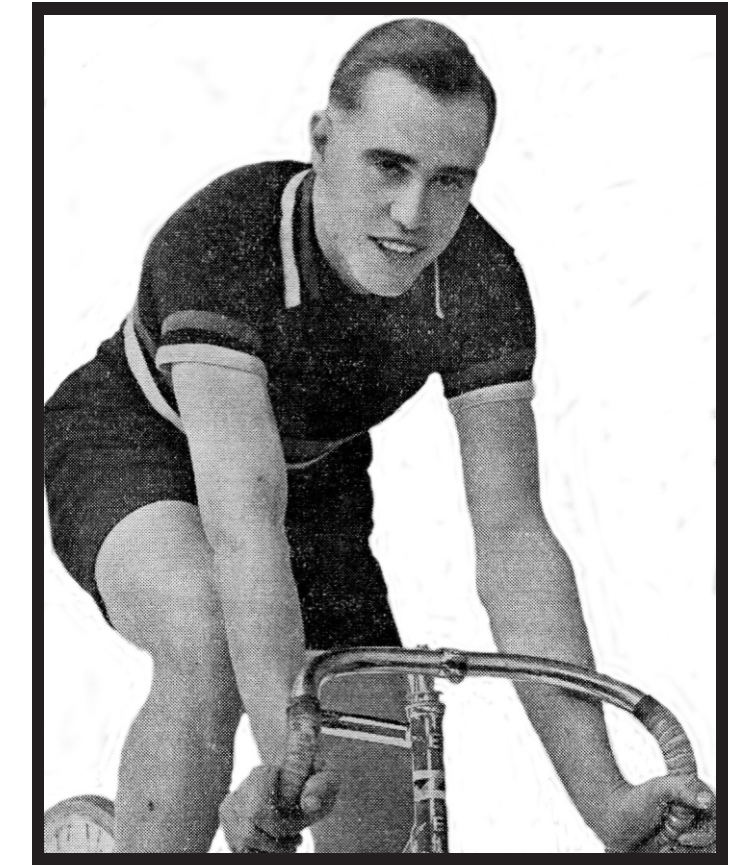
SCHOOL BUSES

When the Hart School closed at the end of 1941, a new bus run was established to transport the children from the Hart district to Brinkworth Primary School. This was a private run with Mr A. Twigden as the first owner/driver, assisted by Miss Esther Weckert. The bus was a Hudson. This bus route extended to Blyth when Brinkworth Area School opened in 1944, bringing secondary students from Blyth and primary students from the Hart area. In 1951 Pastor Kriewaldt took over as owner/driver, sometimes assisted by his son Brenz. Later a teacher residing in Blyth drove the bus owned by Mr Glen Patterson.

During the early days of school buses, there were many problems. At times drivers were faced with mechanical breakdowns and often in winter the roads were in poor condition and buses did not run or were late.

THE FAMILIES WHO ATTENDED THE HART SCHOOLS

Allen, Ashton, Barker, Bray, Brooks, Carruthers, Chambers, Chesson, Chittleborough, Clark, Coleman, Cousins, Crawford, Crettenden, Cross, Daley, Davis, Dean, Dene, Dick, Dienelt, Dohnt, Eckermann, Eime, Elliott, Everett, Fiegert, Forsyth, Freer, Fuller, Grosser, Gursansky, Harris, Haynes, Hendy, Hentschke, Hicks, Hill, Hoopner, Howard, Hughes, Ireland, Jacka, Jaekel, Jaeschke, Johnston, Kaerger, Karger, Kirchner, Knibbs, Lange, Lock, Maitland, Malney, Mannix, Marsh, Martin, Mattner, Maynard, McArthur, McEwin, McLeod, McVicar, Medwell, Mildred, Morrison, Naulty, Nestor, Nickolls, Noel, Norton, O'Riley, Palmer, Partridge, Pattullo, Pittman, Porteous, Purdie, Radomi, Riss, Scharenberg, Schumacher, Schuster, Shannon, Sharp, Shepherd, Siviour, Skinner, Smith, Spurling, Squire, Steinhart, Stevens, Stevenson, Stott, Tetzlaff, Thomson, Vogt, Walsh, Wauchope, Webber, Wedding, Wehrmann, Welke, Wells, Wendland, Whiteman, Wittwer, Wooldridge, Zweck



JIM NESTOR, OLYMPIC CYCLIST
[Source: Leon Sims]

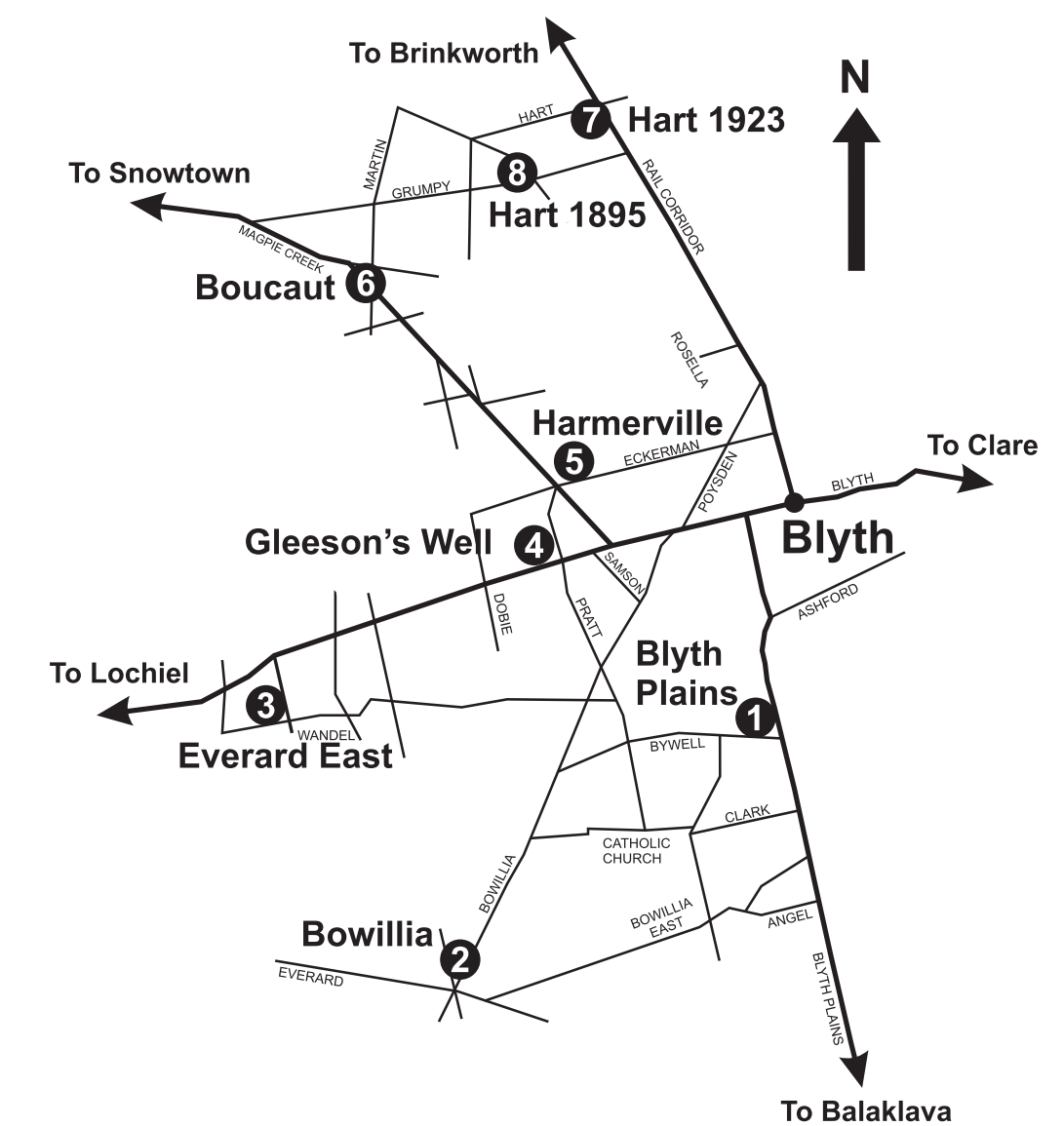
EDWARD JAMES 'JIM' NESTOR

1920 – 2010

Jim Nestor was enrolled at Hart School from 1925 to 1929. Jim was the son of Edward and Ethel Nestor of Belalie, near Jamestown. His father worked as a farm labourer but died of cancer when Jim was just three years old, leaving Ethel a widow with three sons under three. Further tragedy struck a few weeks later when the baby, Colin, died of gastroenteritis. It would appear that Ethel came to Hart with her sons to live with her parents. Her father was employed as a railway packer at the Hart Siding.

Jim became a champion cyclist and was an original member of the 1934 Super Elliott professional team. He represented Australia at the 1948 London and 1956 Melbourne Olympic Games and the 1954 Vancouver Empire Games. He forged a career in the cycling world after his days as a competitor were over.

Jim Nestor received a posthumous Order of Australia Medal in 2011 for services to cycling as a coach and official.



Map showing location of Blyth district school signs

Donated by : McEwin Family, Pittman Family, Margaret Millard (nee Lange), Ian & Narelle Roberts, Ian & Janet Zweck, Jaeschke Family, Leon & Margaret Zweck, Kym & Jenny Ottens, WRC Community Benefit Fund, Blyth Development Board, Blyth Progress Association.

A JOINT PROJECT OF BLYTH PROGRESS ASSOCIATION & CLARE REGIONAL HISTORY GROUP 2015