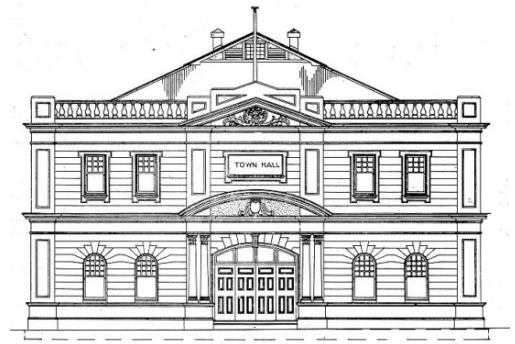


# CLARE REGIONAL HISTORY GROUP

NEWSLETTER  
SUMMER 2015/2016



## PURCHASE YOUR OWN COPY OF A SPECIAL DATE OF THE NORTHERN ARGUS

One of our most popular resources is *The Northern Argus*. For many of the issues we have a spare copy and these can be purchased for the price of \$20. Do you have a family member having special event such as a birthday or wedding anniversary? Check with us, we may be able to provide the perfect gift!

Visit the History Collection (upstairs, Clare Town Hall) to obtain your copy. Thurs & Fri 1-4pm.

Funds raised will go towards our current projects which include:

- Signage to list all burials in the Clare Cemetery
- Conservation of 160 World War I photos
- The research and erection of large interpretive signs for the Bain Rotunda, Clarevale, Berwick Street Reserve and Maynard Pioneer Park.

But don't be alarmed – we are only selling the spare copies. We hold a complete set of the paper back to the first issue in Feb 1869. Until Feb 2016 (see text box below) we relied on microfilm for the years from 1869 until 1956, after which we have the actual newspapers. The newspaper is also available on the National Library's digital newspaper website *Trove*. Another very useful tool is the Simple Index which provides a name index for the years from 1937 to 1990.

### A SIGNIFICANT GIFT OF NEWSPAPER RESOURCES

In the first week of February we took delivery of a complete set of *The Northern Argus*, from the local Argus office which no longer has the storage capacity to retain and access the papers. For the first time we have paper copies of the earliest issues.

We are in the process of getting the volumes in order and planning our storage requirements. We hope to provide an area where these can be researched exclusively for those who prefer to look at the "real" newspaper and for projects where the paper version is easier to search. There will be an update in the next newsletter.

We sincerely thank the Argus staff for having the insight to pass the papers onto us, and for their continuing support as a long term Corporate Member of our History Group.

### INSIDE:

Local History Month events (Page 2)

Climate change on the Blyth Plains in the 1930s (page 3)

Dr Bain's estate (Page 4)

Railway Centenary (Page 5)

A guide to using the Sands & McDougall directories (Page 6)



←  
New granite  
row markers  
just installed  
at Clare  
Cemetery by  
Council staff

*We are building a Collection of written and photographic items of historic value to Clare and region*

# NEWS FROM THE GROUP

## EVENT PLANNING FOR HISTORY MONTH

Our online entries have been completed and we are pleased to announce that we have six events planned, plus our regular opening hours:

**Sun 1<sup>st</sup> May 2pm** Celebration of refurbished Bain Rotunda and landscaping – including musical entertainment.

**Mon 2<sup>nd</sup> – Fri 27<sup>th</sup> May** “What’s in your drawers – fabulous records from private places” a photographic display of items found in family records. Clare Town Hall foyer 9-5 daily (not weekends). During the Rotary Art Show this display will be moved to an adjacent room if necessary.

**Wed 25<sup>th</sup> May 6.30/7.00pm** History Dinner and Guest Speaker Historian Peter Brinkworth will speak on his book about Ernst Siekmann, early settler of Saddleworth and later Caltowie. Two course meal. \$30. Bentley Hotel.

**Thurs 26<sup>th</sup> May 4/4.30pm** Launch of Ass. Professor Jack Cross’ new title – Two Crosses – Ephraim & Jack. Also the gifting of **The Cross Collection** - a selection of SA regional histories given by Jack Cross. Barbara J Long Function Room & History Collection, Clare Town Hall.

**Fri 27<sup>th</sup> May 10am – 3pm** Old and new history book sale – Clare Town Hall foyer. Please check your shelves and donate towards this fundraiser, when we sell on books of which we have duplicates. Our own publications will also be on sale.

**Sun 29<sup>th</sup> May 5pm** Unveiling of stone entrance wall and interpretive sign at Melrose Park. Train rides and refreshments. The existing plaque will be incorporated into the wall and an interpretive sign about AJ Melrose and the park erected nearby.



This is the existing plaque at Melrose Park [CRHG]

## OTHER COMING EVENTS

Sun 10<sup>th</sup> April 2pm Riverton-Clare Railway Centenary committee meeting – BJ Long Function Room, Clare Town Hall (see page 5).

## PROPOSED HISTORY & GENEALOGY EXPO

### ADELAIDE 2016

Following on from the success of the 2010 ‘Unlock the Past’ Expo, this event is tentatively planned for October 2016. There will be exhibitors, presentations, product demonstrations and consultations with experts. CRHG plan to hold a book stall and information display over the weekend. It will be held at Immanuel College, Road, Novar Gardens.

Enquiries to 8395 7476 or email Alan Phillips at [alan@unlockthepast.com.au](mailto:alan@unlockthepast.com.au)

## GRANT SUCCESS

We are pleased to report that the History Group was successful in receiving a Council Community Asset grant of \$2,500 towards the conservation of photos of local World War I service people. We now await news of our application to the Department of Veteran affairs for the final amount required to enable this restoration work to proceed.

## COMMUNITY EVENT OF THE YEAR

Further, we are proud to report that the Blyth School Interpretive Signs Project was judged the Wakefield Regional Council Community Event of the Year. Helen Perry represented the History Group at the Blyth Australia Day celebrations when Mayor Rodney Reid presented the award to Blyth Progress Association.

## MORE RAILWAY HISTORY

At Australia Day at Auburn Centenary Park, local historian Kay Lambert had an excellent display of the history of the Auburn railway on display. These boards of photos will also be on show at the next Auburn Sunday Market on 21 Feb 10am. The following insight into education was in the display:

“Auburn and Undalya children went by train to Riverton High School, some went daily, some boarded in Riverton. Some had tea in Riverton, had homework supervision at the high school and returned about 9pm, having left Auburn about 7.15am. Two nights a week they did their homework at the school cleaner’s house, Mrs Parnell, someone walking to the train with them if dark.”

Kay can be contacted at [dklamb@rbe.net.au](mailto:dklamb@rbe.net.au)

# CLIMATE CHANGE ON THE BLYTH PLAINS IN THE 1930s

Letter to the Editor, *Wooroora Producer - Balaklava*, 3 Jan 1935, p3

## **Mr AE King Discusses Abnormal Weather Conditions Much Evidence that Tree-Destruction Is Responsible.**

Mr AE King, who is in charge of the Everard East School, here discusses the possible effect of the ruthless destruction of our natural flora on climatic conditions. His views are not new and there are many who agree with them; but this article should do much to influence those whose policy it is to destroy natural timber to their own detriment as well as that of their fellow men.

From time to time, reports come to hand of serious droughts and floods in various parts of Australia resulting in untold sufferings of both human beings and animals, with loss of life and tremendous damage to property also.

One might ask oneself, "What are the causes?" and this problem has always been one of deep concern to the man on the land.

There must be a cause, and, if a cause, then a remedy. Everyone knows that where the balance of nature has been upset, drastic changes have been brought about, sometimes to the benefit of mankind but more often otherwise.

In studying the records of the rainfall over varying periods, one realises that the average remains about the same in each particular district: why then the low average yield, where formerly comparatively higher ones?

Our first conclusion is that the rainfall does not come in regular periods as formerly. We get a larger quantity at one time, as witness the heavy fall in this district in March two years ago with only light rains to follow, and they not very frequent. To find the cause of this is not quite as easy as may be imagined; but after studying the problem from all angles I have come to the conclusion that the destruction of our native timber has been one of the chief contributing factors.

Let me explain my theory: The average large mallee tree gives off by respiration as much as six gallons of water each day during the summer and this is absorbed by the air. We can then say that the average tree gives off – taking large and small – at least one gallon each per day. Just think of this amount being absorbed by the surrounding air!

The trees themselves help to keep a more even temperature of the earth's surface, and when we reckon the millions of trees that have been ruthlessly destroyed, we can quite understand how the balance of nature has been upset. Again, the removal of trees has allowed the wind to have full play.

Now, our prevailing winds are mostly from the north – at least, those that do the damage are. When they cross the equator they are rain-bearing; but they soon lose their moisture by reason of monsoonal rains in the northern parts of Australia. By the time the centre of Australia reached, these winds become known as water drinking winds, absorbing the moisture from the soil, turning the land into the desert we know so well.

When these winds reached the mallee belt they were deflected upwards above the mallee, their force was broken and they began to absorb the moisture given off from the

trees by respiration and were again changed to moisture-laden winds. As they came still further south they would become heavily laden with moisture, be cooled and eventually come to earth as rain, whereas these winds now have a free passage, absorbing the moisture from the soil by capillary action. Hence we get an erratic rainfall, with occasional droughts and floods.

Now for the other part. Where hills and mountains have been denuded of their timber, then so will disastrous floods follow, as the people living in the lower levels around Adelaide know. The absence of trees causes the rain to fall heavily over one particular area. Soil is eroded rock and the trees help to fix the soil to the slopes of hills and mountains. The deeper the soil in any given place, the more moisture will be absorbed, which means less to run away. The water percolates through the soil slowly, instead of running away quickly.

As the trees are removed, more soil than usual is carried down by the storm waters, until the bare face of the rock is exposed. The water will not penetrate this and so runs quickly down the valleys, gathering more force and volume as it goes, the result being another flood, endangering life and property.

In case my friends are still unconvinced that the destruction of trees is the cause of floods and droughts, I will add a few facts from older countries which can be verified by anyone who takes the trouble to do so.

Denmark, a much older country than ours, had the same experience as that which we are undergoing. Experts were called in, records looked up and statistics proved that before the timber was denuded from the mountainsides, a more equable climate resulted; so by Government decree, where one tree was cut down, another had to be planted in its place, and the person responsible had to see that it grew. Waste land was planted under Government supervision, even the children being pressed into service and a kind of Arbor Day carried out in the form of a picnic.

The result is that today unprofitable mountain slopes have been made to produce again and droughts and heavy floods are conspicuous by their absence, clearly proving that trees play a very large part in our climatic conditions.

Not let us turn to America: Following the record drought of this year, they intend to plant belts of green and leafy evergreens at intervals across the country to keep the hot winds in check and to prevent the deserts from increasing, clearly showing that they are fully alive to the value of trees in modifying both winds and deserts.

America, Africa and Australia are all suffering from the same plight: trees have been ruthlessly destroyed in the past, with the result that wind and deserts have taken their toll. It behoves every patriotic Australian to see that this state of things does not continue any longer and to rise up and protect our native flora. – **I am, Sir, AE KING.**

## DR BAIN'S CLEARING SALE AND PROPERTY AUCTION

One of the events in History Month (May) is the celebration of the completed renovation of the Bain Rotunda in Hope Street. The rotunda was erected in 1904 in memory of this much loved benefactor of Clare, Dr John WD Bain.

Neglected for many years it has been primarily Hope Street residents who have taken the rotunda to their hearts and worked tirelessly to see it returned to its former glory. The final stage is terracing and landscaping.

The event on Sunday 1<sup>st</sup> May from 2pm will feature bands and other musical entertainment.

**From The Northern Argus 27/11/1903, p2:**

### SALE OF LATE DOCTOR BAIN'S HOUSE PROPERTY SATURDAY, DECEMBER 12, 1903, at 3 o'clock.

#### AT G.T. HARDER'S CLARE LAND OFFICE

G. T. HARDER Will sell by auction on account of the Executors of the Estate late John W. D. Bain –  
The PIECES OF LAND, being –

Allotment 1, 2, 3, and Block of Land on the northerly side of these Allotments, all part of Section 40, Hundred of Clare, containing 7 acres 1 rood 23 perches.

Allotments 1, 2, 3, 4, 5, 6, of Section 40, Hundred of Clare, containing 1 acre 2 roods 29 perches.

In all, 9 ACRES 12 PERCHES of land.

IMPROVEMENTS are Stone Dwelling of 12 Rooms, and Cellar, very large Underground Tank, Conservatory, Stables, and other Outhouses, Garden.

For Absolute Sale. Terms and Conditions at sale.



**Dr Bain's home at 22 Agnes Street, Clare [CRHG]**

### ESTATE SALE OF GOOD FURNITURE WEDNESDAY, DECEMBER 9, 1903

At 1.30 o'clock.

#### AT THE TOWN HALL, CLARE

G. T. HARDER Will sell by auction, on account of the Executors of the Estate late Doctor John W. D. Bain –  
All the HOUSEHOLD FURNITURE AND PERSONAL EFFECTS contained in the Dwelling House of 9 rooms and cellar –

##### HALL

Some nice Pictures, Linoleum, Microscope, Medicine Chest, 1 Chair, Door Slips, Hall Lamp, &c.

##### DRAWING ROOM

First-class Pianoforte (Biese), some good Pictures, including Oils and 1 large Oil, "Sunset," Couch, Easy and other Chairs, Music Canterbury, Music Stool, Round Loo Table, 2 Occasional Tables, Brussels Carpet, Hearthrug, Fender and Irons, Gipsy Table, small round Table, Silk Cushion, Folding Chair, Marble Ornaments, High Lamp, Vases, and other Ornaments, Cornice drape and Curtains, &c.

##### DINING ROOM

Dining Table, 5 Berlin Chairs, 2 Spoon-back Easy Chairs, Linoleum, Hearthrug, a lot of nice Pictures, Mahogany Sideboard, 5-set Dinner Trays, Fender and Irons, Cedar Side Table, Bookshelves, a large number of valuable Books, Black marble Clock, Patchwork Rug, Crockery, Glassware, Cutlery.

##### BEDROOMS (3)

Full-size and Single Bedsteads and Bedding, Kidder carpets, Washstands and Dressing Tables, Looking-glasses, Toilet Sets, Pictures, Chest 5 Drawers, Chest 8 Drawers, Curtain Poles, Japanese Cabinet, Commode, Cane Couch, Chairs.

##### KITCHEN AND PANTRY

Dresser, Chairs, Safes, Tables and Covers, Wringer and Stand, and the usual Kitchen Utensils, Washtubs, &c.

##### OUTSIDE

59 pot Plats, Model of House in Glass Cover, Door Scraper, Mat, 3 Watercans, Cane Lounge, Rocking Chair, Thermometer, wet or dry, Stepladder, &c., &c.

Terms – Approved Bills for Sums over £30.

Note – Remember the day, Wednesday, Dec. 9, at 1.30 at the Town Hall, Clare.

The Pianoforte is a first-class instrument.

The whole is for absolute sale, without reserve.



*By Euan and Carolyn Semple, with reference to the work of Dr John Wilson and other sources*

It was in 1918 that, bedecked with flags, the first train arrived at Clare station. It was one of the last railways to be constructed in South Australia and was the culmination of years of study starting about 1866 and going into the early 20th century.

The problem was cost. For a long time it was more beneficial to develop lines on the Blyth Plains and in Yorke Peninsula (where it was flat) so helping with development rather than making a difficult line to Clare which as an agricultural town managed well enough using horse and cart to get to Blyth or Farrell Flat.

Deciding where a railway line should go depends on some obvious points and some more hidden ones. The most serious problem is gradient with 1:50 being about the limit due to slippage: parts of the Clare line around Penwortham are 1: 40. On top of this there were further difficulties from politics and vested interests.

Added to this is the fact that if a line has a significant gradient, then the surrounding countryside is likely also to have undulations which result in the need for cuttings and embankments. Even modest work in this respect can lead to significant amounts of earth being moved. To see this, walk north along the Riesling Trail from CFS Headquarters - this is actually the line extension to Spalding from Clare but it illustrates the problem. Think how much material needed to be moved to make the cuttings and the embankments, using only spade work plus horses and carts in those days. Another issue is to make the material cut out for the cuttings be nearly equal to the amount used for embankments. If this is done efficiently there are no shortages or leftovers and the distance the material has to be moved is limited. This is not easy and requires detailed planning.

With all these issues it is not surprising that it took to 1910 for the Clare bill to be passed by the Legislative Council. Due to the tendering process, etc it was 1914 before work actually began. With all these difficulties it might be thought that it would then be plain sailing when the bill was passed, but this was not the case. There was a shortage of labour due to the war and when 200 workmen were rounded up they immediately went on strike for more money - \$9 per hour rather than the \$8 offered. Later there were other strikes at Riverton and Auburn demanding \$10 per hour. This was eventually settled, but the arbitrator rejected the demand for free spades and tools. There was a lot of labour trouble in the valley at that time involving vineyard workers and others so this was no exception.

*For Safety, Economy and Comfort*  
**TRAVEL BY RAIL!**

The Railway from Riverton to Clare was opened on 5th July, 1918, and a daily train service now operates between Adelaide and Clare, a distance of 91 miles.

**RAIL FARES—**

**ADELAIDE and CLARE**

Single	Return	Excursion
11/-	16/6	12/4

**WEEK-END EXCURSIONS**

Week-End Excursion Tickets are also issued, at single fare for return journey, to or from Clare. These tickets are issued on Saturdays, and are available for return until the following Monday, and should the Monday be a Public Holiday, the tickets are available for return until the following Tuesday.

Ref. BONDS Scenic Motor Tours brochure c1937

Then there was the weather. The construction years were exceptionally wet and this inevitably slowed work. The reports on progress tried put a good face on it all, but in fact it took more than twice as long to build the railway than was expected. Nonetheless in 1914 the line to Clare was complete. Sadly it made a loss from the day it opened.

The next meeting of the Railway Centenary group will be held on Sun 10<sup>th</sup> April 2pm, Barbara J Long Function Room, Clare Town Hall. Matters will be advanced and Dr John Wilson will talk about his progress on a book about the history of the railway, the launch of which will form a major event in 2018. Enquiries to David Lloyd on 0418 844129 or email [clarehistory@internode.on.net](mailto:clarehistory@internode.on.net)

## SANDS & McDOUGALL'S POSTAL DIRECTORY OF S.A.

These directories have long been a useful of locating people in South Australia especially in the nineteenth century, with the absence of census records (apart from 1841) and more recent sources such as phone books. The following guide to the directories has come to light among old Council records and gives a useful outline of the information contained in the annual publications. The History Collection has the directories on microfiche for the years 1839 to 1900.

Using the Directory is really as simple as ABC. YOUR ABC to it is the Master Index just inside the front cover. **FIRSTLY** then, look there for the page numbers of the section you require.

Because there are so many ways in which this book can be put to your service there is set out below in greater detail, helpful information on how to use it to your advantage.

You wish to find :—	Turn to the :—	And you will have spread before you :—
A certain householder whose name is all you know.	Alphabetical Section.	Nearly 600 pages of the names of each householder in the Metropolitan Area. It provides his name, initials, house number and the street and suburb in which he lives.
The street in which he lives.	Streets Index and locate its page number.	The name of every occupied street, terrace, road, crescent and the like with its suburban location in the Metropolitan Area, and the page number it is on.
What he does and who lives near him.	Street in which he lives.	His house number and his exact location between intersecting streets, who his neighbours are, off what street his own runs, and wherever possible, HIS OCCUPATION shown next to his name.
A cabinet maker or a plumber or a sharebroker or a trustee office.	Professions and Trades index and you will see the page number on which they are listed.	The recognised professions and trades, and quite a number of lesser known ones. As cabinet makers, french polishers, carpenters and joiners and other allied trades are closely interwoven, many cross references are used and listed accordingly. As an example, the list of various types of engineers shown runs into double figures.
A particular town in the Country.	Country Areas index for the appropriate page number.	All the country postal towns and areas, giving distance and direction from Adelaide and listing householders, businesses and other organisations in each locality.
Somebody to supply a swarm of bees.	Professions & Trades index and there is the heading Apiarists.	Beekeepers, bee-farmers or to give them their rightful name—apiarists—from all over the state.



## BOOKS & CDs FOR SALE

**THE OWNERS OF STANLEY FLAT 1836 – 1986** researched and compiled by **William Pattullo**. This item has been out of print for 30 years but has now been reprinted in July 2015. **\$30**

**COTTAGES AND CAMEOS OF CLARE** by WN Johnson (1988) 100pp, illus. **\$25**

**JUST AS IT WAS** by WN Johnson (2001) 97pp, illus. **\$20**

**CLARE - A DISTRICT HISTORY** by R. J. Noye (1998). Definitive history of the town and district. Includes photographs, sketches & maps. Essential starting point in Clare research. 231pp. 4th edition, with new index. **\$20 (\$15 - members)**

**CLARE VALLEY, SA** by Coralie Jones (2014) (A pictorial souvenir). **\$20**

**CLARE SHOW "A fine all round display" for 150 years** by David Bond (2014) Written to celebrate 150 years of shows in Clare. **\$33**

**A History of Ngadjuri Lodge Trust** by Win Johnson (2011). **\$10**

**The story of Bungaree Station** by Rob Linn (2011) Illus. **\$17**

**FROM WHERE I SIT** A Collection of articles on chosen themes written over past times by Win Johnson **\$16**

**THE PATHS OF GLORY LEAD BUT TO THE GRAVE a history of Clare Cemeteries** by EHH 'Clarion' Tilbrook and Miss M Tilbrook (originally published in *The Northern Argus* in 1939) **Re-released with updated index. \$20**

**CLARE CAMEOS** by Win Johnson (1986). 2<sup>nd</sup> ed. Includes oral histories of our older Clare residents as interviewed by Win in the State's Sesquicentennial year. **\$15**

**TALKING HISTORY – Tales of Clare S.A.** by R.J. (Bob) Noye (2003). 50 articles published weekly in *The Northern Argus*. **\$15**

**THE CLARE I REMEMBER** by J.J. 'Boss' Simons. 13 articles published in *The Northern Argus* in 1944, describing the Clare of Simons' boyhood in the 1880's and 1890's. Fully indexed. **\$15**

**THE LAND HISTORY OF POLISH HILL RIVER 1842 - 1990** by William Pattullo (1991). Details the ownership history of 120 sections of land in Polish Hill River, to the edge of Mintaro township. **\$25**

**CARINYA 1956 - 1989 A Peaceful and happy home** Compiled by Marj. Ashby. **\$5**

**THE METHODISTS OF CLARE 1851 - 1977** by Win Johnson (1994). 124pp. Indexed. **\$12**

**CLARE PRESBYTERIAN CHURCH - a history 1856 - 1988** by Helen Dickeson (1993). 120pp. Includes baptisms, marriages, burials, and extensive index. **\$14**

**HARD-YACKA - The story of a Mid-North town in South Australia** by Julie-Ann Ellis (1995). **\$40**

**JUST AS IT WAS** by Winifred Johnson (2001) Tells the story of Win's life with humour and affection. 96pp including photos **\$18**

**BLYTH - a silo of stories 1860 - 1990** by Win Johnson (1991). A comprehensive history of the town and district of Blyth, including family stories, farming, community and sporting activities. Excellent photographs, many in colour. **\$45**

**BUNGAREE – Land, Stock & People:** History of Hawker family and Bungaree Station (1992). 230pp **\$45**

**MAGPIE CREEK JUNCTION a history of Brinkworth and district 1892 – 1992 (1992)** **\$50**

**SADDLEWORTH - Hub of the Wheel** by Elinor A. Bellman (1995) **\$35**

**CLARE – A BACKWARD GLANCE** – by J. Haynes & E.J. Schmaal (1980) **\$8**

**HEAD OF THE RIVERS – Black Springs, Manoora, Waterloo** (1992) **\$25**

**MARRABEL AND DISTRICT** – The Legend of Curio – a history of Marrabel & district **\$25**

**MARRABEL & DISTRICT REVISITED** – additional material of the 'early days' at Marrabel **\$25**

**HILL RIVER A Valley of History** by Gerald Lally (2004) **\$30**

**A LANDMARK OF FAITH Church of the Immaculate Conception Mintaro and its parishioners 1856–2006** by Gerald Lally (2006) **\$35**

**TIMES PAST – a pictorial history of Farrell Flat** by Gerald A. Lally (2012) 194pp. **\$30**

**"A WALK WITH LAUREL" a walking tour of the buildings and families of Farrell Flat from the memories of the period 1929 – 1939** by Laurel Neill (nee Mickel) (2012) **\$5**

**South Clare Sports Club – Celebrating 50 years of success 1960 – 2010** by Gerald Lally et. Al. (2010) **\$20**

**THE INCHQUIN STORY** by Jean Schmaal. **\$5**

**A QUAIN COURTHOUSE** by Jean Schmaal, **\$5**

\*\*\*\*\*

### CD-ROMS

**HEADSTONE PHOTOS FROM LOCAL CEMETERIES (CD Rom)** (2005) **\$10**



**THE ANNUAL REPORTS OF ROTARY CLUB OF CLARE 1964 – 2011 (DVD)** **\$20** Limited release

**FEDERATION CD ROM** - history of the Clare & Gilbert Valley District for all computer buffs and their friends - a great gift idea! (2002) **\$10**



## CLARE REGIONAL HISTORY GROUP - CONTACT DETAILS

**Postal Address:** PO Box 6 Clare SA 5453

**Location:** Clare Town Hall (upstairs)

**Phone:** (08) 8842 4100 (only in opening hours)

**Web:** [www.users.on.net/~clarehistory](http://www.users.on.net/~clarehistory)

**Email:** [clarehistory@internode.on.net](mailto:clarehistory@internode.on.net)

### **OPENING HOURS**

Thursdays & Fridays – 1.00– 4.00pm  
(If travelling some distance we recommend that you ring and check.)

**Out of Hours Opening Fee - \$20.00**

### **ACQUISITIONS Summer 2015/16**

#### **BOOKS**

Butterss, Philip *An Unsentimental Bloke: the life and works of C.J. Dennis*, 2014

#### **PAPERS & Other**

Clare Rotary Club *Bulletins 2013-2014* (CD), 2015

#### **THE CROSS COLLECTION**

We have also received a large number of South Australian regional histories, donated by Jack Cross. (Refer event page 2)

These will be listed in full in the next issue of this newsletter.

**NEW  
Forum  
Seating  
Units**

*Ideal for Institutes,  
Halls, Schools, Clubs,  
Auditoriums . . . in fact  
wherever group seating  
is required.*

Here's the answer to mass seating problems . . .  
Comfort . . . Appearance . . . Durability . . .  
Minimum maintenance . . . Easier handling for  
setting out. Close stacking for maximum space  
saving. Carefully contoured lift-up padded seat-  
ing, covered in washable Vynex. Baked enamel  
steel frames. Units to seat 3, 4 or 5 persons. Com-  
plies with Places of Public Entertainment Act.

*Why not call, phone or write  
for more details?*

Manufactured and Distributed  
in South Australia by

**namco**

**TUBULAR STEEL INDUSTRIES LIMITED**  
Daws Road, Edwardstown, S.A. Phone 76 1211.



#### **CRHG COMMITTEE**

Chairman:	Gerald Lally
Secretary:	Val Tilbrook
Curator & Treasurer:	Helen Perry
Committee members:	David Bond, Jill Clarke, Carolyn Semple, David Spackman, Lyn Woods.
Newsletter editor:	Helen Perry

The committee meets bi-monthly, the AGM is held in August. Various other events occur throughout the year.

### **SEARCHING FOR A BOOK OR OTHER ITEM IN THE ONLINE CATALOGUE**

Use the link from Clare & Gilbert Valleys  
Council web site (under Libraries)

1. Choose Advanced Search (on RHS of green band).
2. Type in phrase or words searching for in "This Exact Phrase" second line down.
3. In the additional Limits opposite "Library", click the drop down menu arrow at right (don't choose C&GVC Libraries from list lower down).
4. From drop down list choose "Clare Historical Collection (Clare Town Hall) near bottom of page.
5. Scroll down to bottom of page and click on red Advanced Search button.
6. Hits will appear (but without exact location).
7. Click on title of item.
8. Shows more detail including location within History Collection eg. Box 112, FH Wal etc.
9. Click on black button X to close details and return to Hit List.

Repeat with other items as desired.

Thanks to the diligent work of History Group volunteer Bill O'Malley, the majority of our records are catalogued. Have a look at this catalogue – you will be amazed at the range of material we hold.