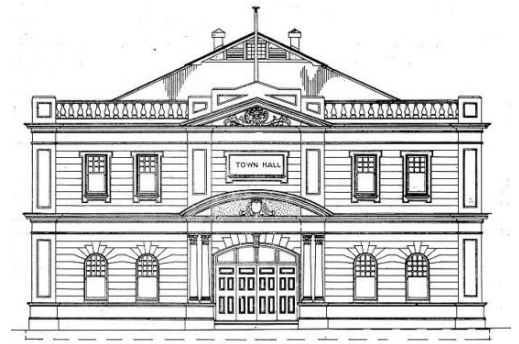


CLARE REGIONAL HISTORY GROUP

NEWSLETTER

Winter – Spring 2016



WELCOME TO PROFESSOR JACK CROSS

In 1859, at a wedding at St Barnabas Church of England, Clare, Ephraim Cross and Jane Wylex signed their marriage certificate with a X. Possibly, like many hard working immigrants, they were illiterate. Their family followed a variety of occupations during the second half of the 19th Century and owned land in the Hart and Southern Flinders areas. How delighted they would have been to see their descendant, Jack, receive a National Distinguished Teaching Award for Teaching Excellence at University Level.

Jack was born at Pt Pirie in December 1930 and lived on his parents' farm near Stone Hut. He was educated at the Appila Plains Lutheran Primary School. Secondary education meant being sent as a boarder to Immanuel College in Adelaide. Here his favourite teacher Rev. Auricht inspired in the young Jack a life-long love of history and geography. His undergraduate degree and teaching qualifications were taken at the University of Adelaide and the Adelaide Teachers' College.



On graduation Jack Cross took up a teaching post at Brinkworth Area School, then on to Darwin Area School. These were followed by five years as a Research Fellow at the University of Adelaide. In the 1960s he completely changed his career directions, returning to the Stone Hut area as a poultry farmer. At the end of the decade he was called to teach education at the Western Teachers' College. He subsequently spent twenty years as Head of Education Studies at the Torrens College of Advanced Education, later part of the University of South Australia.

During his time as Research Fellow at the University of Adelaide he began forty years of archival research into the 19th Century history of the Northern Territory '***Great Central State - the foundation of the Northern Territory***'. This meticulously researched book involved the reading, line by line, of over half a million documents and many oral histories. In recognition of his outstanding research Jack was awarded the 2012 Chief Minister's Award for History.

The Clare Regional History Group is delighted that Jack chose our society to launch his family memoir '***Two Crosses - Ephraim and Jack***' and also the gifting of the Cross Collection to the History Group. This launch was held at the Barbara J Long Room on Thursday May 4th 2016, with a similar event also held in Adelaide.

COMING EVENTS

Sun 4th Dec 12.30pm

Mount Horrocks Historical Society Christmas BBQ – our members are invited to attend. BYO your meat & drinks, and a salad or tart to share. Please RSVP to Anne Weddle Ph 8843 0140.

Fri 16th Dec 4pm

Committee meeting, followed by Christmas cheer

Thurs 1st Dec 7.30pm

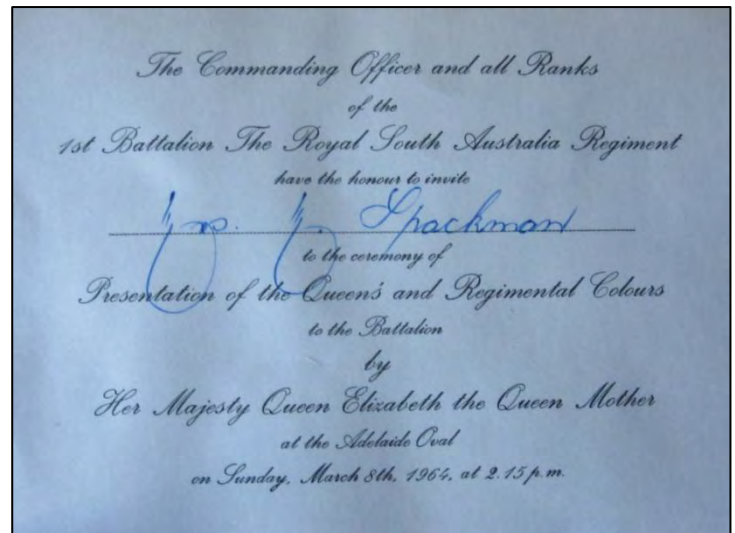
Railway Committee meeting – Stan Scott Meeting Room, Clare Town Hall

The Annual General Meeting was held in the Town Hall Function Room on Thurs 11th August. Chairman Gerald Lally's report is included in this newsletter on pages 5 & 6. Members enjoyed an excellent three course meal prepared by Sue & Ron Wurst. The formal part of the evening was followed by a "Show 'n Tell" session when members shared personal items of historical interest, including:

Joshua Tilbrook's Day Book 1914 – 1918 which records the daily transactions at his Yacka workshop.

Two Solly family ledgers, dated 1906 to 1911 and 1870 to 1933, which includes many cards and

invitations. Here is an example:



These three volumes have now been digitally recorded using our overhead copy camera, and are stored on the computer network. There is a wealth of material that has been copied using this camera, including Council assessments, cemetery records, school registers, family records and records of community groups.

BELOW is a quiz from **Placenames Australia magazine** June 2016 p11 [Answers on back page]

Placenames Puzzle Number 58

Biblical figures

Our clues refer to well-known figures from the Bible (from both the Old and New Testaments).

e.g. (QLD, reef) he was tested when every possible disaster happened to him and his family, though all was made right in the end... Job Reef

- (QLD, mountain) the first High Priest of the Israelites, and Moses' older brother and spokesman
- (QLD, creek) the disciple who kissed Jesus
- (TAS, lake) the progenitor complicit in the 'Fall of Man'
- (TAS, gorge) the shepherd who was the first murder victim
- (QLD, headland) he built a boat to save his family
- (WA, headland) God declared he would be known as the 'father of many nations'
- (WA, creek) he accompanied Moses on his ascent of Mount Sinai to receive the Ten Commandments
- (TAS, lake) hers is the most famous parthenogenesis of all
- (TAS, lake) the first temptress, and a palindrome too
- (TAS, mountain) he had a vision of a ladder reaching into heaven
- (QLD, river) he was almost sacrificed on the altar by his father Abraham
- (QLD, town) she hid her baby brother in the bulrushes; (poetic) valley.
- (VIC, mountain) wife and half-sister of Abraham
- (QLD, mountain) the carpenter who travelled to Bethlehem for the census
- (QLD, creek) the first murderer
- (VIC, mountain) she favoured her younger son and planned her husband's deception
- (TAS, creek) Jacob's second wife
- (TAS, bay) the prophet whose journey to Nineveh had a fishy terminus
- (WA, mountain) the Bible's only female judge
- (QLD, mountain) he led the exodus of the Israelites

[Compiled by: Jan Tent]

RAILWAY ARTICLE 4 – Rolling Stock (by Euan & Carol Semple)

When the Riverton to Clare line finally got going there were a number of locomotives which could in theory be used to pull the trucks and carriages, but reality intervened and most were not used on a regular basis. Part of the problem was the fact that branch lines were built to less stringent standards than main lines - like the Broken Hill line: bridges were less strong, and the lines in a number of ways were inferior. The combination of steep gradients and tight curves meant that only very limited loads could be pulled.



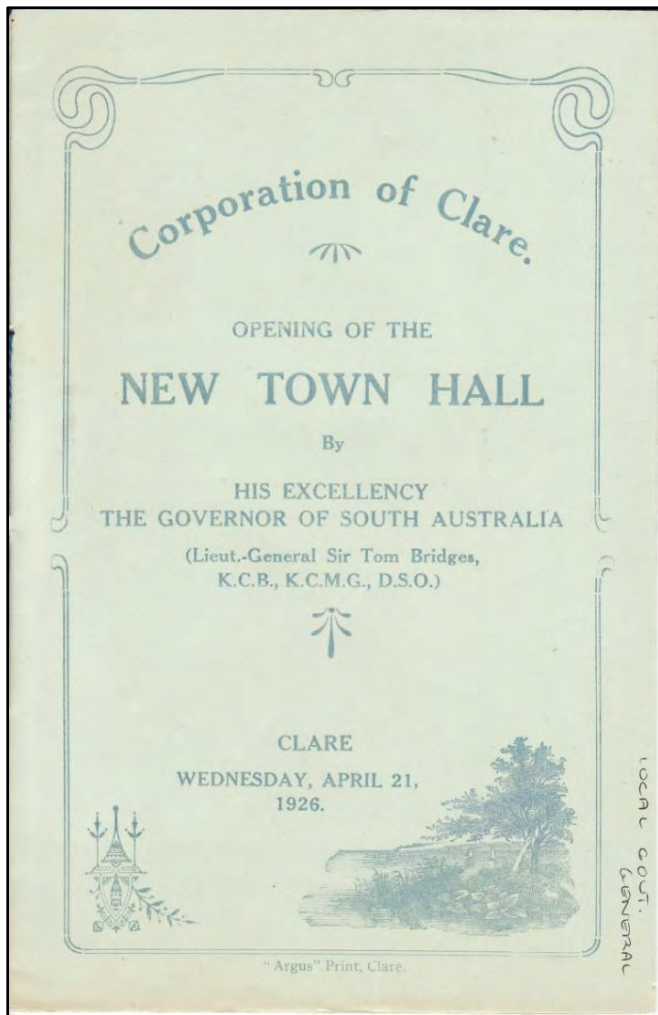
Initially the most commonly used locos were the 'Mikado 750' and the 'Q' class which just managed to satisfy the safety requirements of the line. Other locomotives which the Commission for SA Railways had, for example 'Pacific Mikado 800s', 'Mountain 500s', 'tank engines', etc; were unsuitable for one reason or another. Sometime after the line was opened SA bought 10 'N class' locos from Victoria. These were good for the Clare line as they were more powerful than the 'Mikado 750s' but still managed to be within the limits imposed for branch lines. In passing it is worth noting that the Intercontinental Express was the smartest engine that the SA Commission had, and was used for speed on the flat tracks towards the Victorian boundary. It was also used for special occasions. The photos of the opening of the railway in 1918 show this engine. It is unlikely that it ever visited Clare again.

A shortage of water was another serious problem since water is obviously a vital necessity for steam engines. Tank engines were initially listed as suitable for the line but in fact they would have run out of water. Water was a serious problem for all the locomotives, and a special railway dam had to be built at Ohlmeyer Park so that engines could return to Riverton or go on to Spalding. This dam still exists and the pipe which used to go to the station was used for many years to irrigate the oval.

Despite these short comings there was an advantage for residents south of Clare in that they could easily get into Clare to shop. Also, as today, there was a new tourist trade. But it seems that there was insufficient demand to justify more than one composite carriage for passengers. This carriage was divided in two for first and second class passengers. In local parlance it was called a 'dog box' carriage. Extension of the line to Spalding in 1920 increased the passenger demand a little, but even so there was still only one passenger coach on the part of the line from Clare to Riverton, and the train sometimes ran only three times a week.

As a consequence of all this it is not surprising that from the start this branch line was not profitable. Indeed the reason it was built at all was political. At the time it was finally considered, every community had its hand up to get a rail line in the hope that it would lead to the development of the surrounding land, increase land prices and lower transport costs. The politicians were well aware of this and so at election time they promised lines through as many places as possible. Clare was attractive as it had a sizable population but there was no overwhelming need for a railway to Clare. It seemed necessary because Clare was by far the largest town in the area and for this reason it finally got itself to the top of the pile.

CLARE TOWN HALL CELEBRATES 90 YEARS



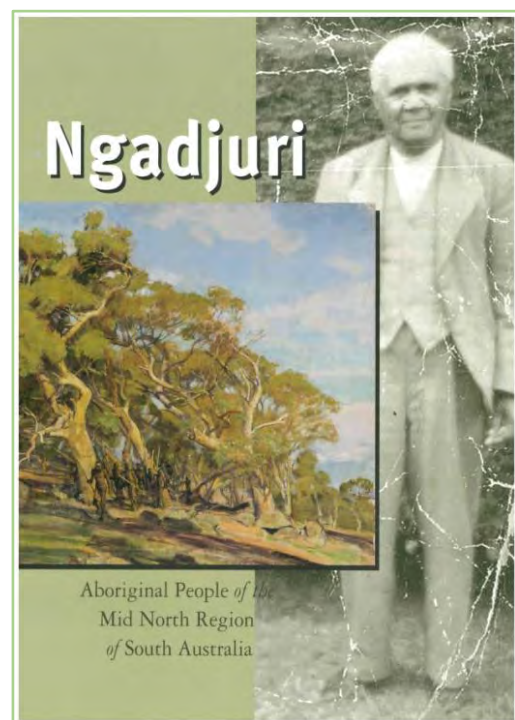
A gala dinner and musical entertainment was held in the Clare Town Hall on Saturday 20th August to celebrate 90 years since the hall opened to the public in 1926. Ninety people enjoyed a meal provided by Lions Club of Clare Districts and an excellent performance by the Clare Valley Concert Band.

A cake replicating the Town Hall was created by Kathy Tilbrook of Penwortham and the model hall continues to be on display in the Town Hall foyer.

Music was also provided by Songs of Adelaide, courtesy of HATS. A large number of items were contributed towards a Silent Auction, and people were able to pay \$20 for a "lucky dip" at the Wine Wall consisting of 100 bottles donated by Clare Valley Winemakers and local wineries.

Overall, the event raised \$4,000 which has been put towards the installation of a ten rack combi-oven in the Town Hall kitchen. This appliance will greatly enhance the catering of large crowds and has been put into good use for a number of subsequent events including the Clare Valley Winemakers annual dinner, the Clare Valley Dance Weekend, and biscuit-making as part of the Clare Library holidays activities.

Kathy Tilbrook, of Penwortham, pictured with the amazing cake she created to replicate the Clare Town Hall.



This book, published in 2005, is the comprehensive history of the local Ngadjuri people and is now available from the History Collection for \$40.

**CHAIRMAN'S REPORT TO THE ANNUAL GENERAL MEETING
HELD IN THE BARBARA LONG ROOM, CLARE TOWN HALL, 11TH AUGUST, 2016**

Where have the past twelve months gone? What a very busy year of activities and events.

Our book sales bring in a steady stream of income and in July/August last year we had several publications, low in stock, reprinted. In future we will need to undertake a reprint of Bob Noye's book, *Clare A District History*. To this point, our member, Sue Wurst has decided to undertake the huge task of research into Clare's history from where Bob finished his publication in 1975. At some stage in the future, this may be added to Bob's work for a reprint.

October saw the culmination of research and organisation by Helen, regarding interpretive signage in the Blyth district. Helen worked in collaboration with the Blyth Progress Association, in recognising eight historic sites around the Blyth district. This well-attended event was enjoyed by all. We have also worked with the Bain Rotunda Committee with interpretive signage, which will be unveiled later this year [9th October – ED.].

After receiving a quote from Artlab for the restoration of our WWI soldier photos, Helen applied for several Grants. So far we have been successful with a \$2,500 Grant from Clare & Gilbert Valleys Council, \$3,000 from the Department of Veteran Affairs and a donation in kind from the local RSL branch. A further application has been sent to History SA, who we hope to hear from in due course. [Editor's note: This grant was successful and we have now received \$7,500 in grants and \$3,535.45 in donations which will cover the total cost of restoration by Artlab. Completion is planned for June 2017.]

A Clare Railway Centenary Committee has been formed to celebrate the Centenary of the opening of the Riverton to Clare rail section in July 2018. Several members have joined this committee, with ongoing meetings leading up to the event.

In November 2015 the Group held a book stall in conjunction with Writer's Week, with several publications sold. In December we participated in the annual Christmas Tree display in the Town Hall. Functions such as these are a good way to publicise our Group and its activities.

In January, the Northern Argus donated to the Clare Regional History Group their old original copies of the paper dating back to the 1870s. These are a great asset and resource and we plan to store them on relevant shelving.

In February several members met for another working bee at the Clare Cemetery to take photos for our updating cemeteries project. We are working towards interpretive signage to be placed in the cemetery shelter. A small committee has been formed to care for the grounds of the cemetery.

History Month, held in May, was an extremely busy period for the Group. Helen coordinated a photographic display in the Town Hall foyer. Guest speaker, historian, Peter Brinkworth attended and spoke of his book about Ernst Siekmann, an early settler of Saddleworth. Associate Professor Jack Cross launched his family history publication, *Two Crosses* and also officially donated his selection of SA regional histories to our Collection. A book sale was held, which proved to be very fruitful. The last event of the month in which we were involved was the unveiling of an interpretive sign, stone wall and plaque at Melrose Park.

Our assistance in researching for historic signs is an ongoing project. The Stanley Flat community is slowly working on their signs. Kybunga community used our resources for their school sign and the Riesling Trail committee is working on signage. We are also working on signage for the former Clare Showgrounds site, Pioneer Park and possibly Clarevale winery building.

Earlier in the year, Clare & Gilbert Valleys Council approached the History Group re suggesting names of roads within a housing development at Clare. We appreciate the interaction with Council on this matter.

**CHAIRMAN'S REPORT TO THE ANNUAL GENERAL MEETING
HELD IN THE BARBARA LONG ROOM, CLARE TOWN HALL, 11TH AUGUST, 2016**

To our members a big thank you again for your time, effort and skills which you give to the Clare Regional History Group, especially to Helen, for her dedication, expertise and knowledge in so many ways. To Jill for her patience and persistence in the photographic room, Val as Secretary and her huge local knowledge and research talents, Bill for his ongoing patience in cataloguing, Lyn for her family history knowledge and general research, Carol and husband Euan, for your efforts in organising the copies of the old Northern Argus'. To David and Prue, thank you both for the work you are able to do when available.

The number of volunteer hours our members contributed to the History Group this past year was 2004, an increase on last year and the number of visitors recorded was 755, over twice the number the previous year, which is a great result.

We may be a small group, but we should all be justly proud in the way we contribute towards keeping history alive in our town and district.

Gerald Lally, Chairman
Clare Regional History Group



Clare Railway Station looking south east with Goods Shed at rear

BOOKS & CDs FOR SALE

NEWLY IN STOCK:

Warrior, Fred et. Al. Ngadjuri – Aboriginal people of the Mid North region of South Australia, Meadows SA, SASOSE Council Inc, 2005 - **\$40.**

THE OWNERS OF STANLEY FLAT 1836 – 1986 researched and compiled by **William Pattullo**. This item has been out of print for 30 years but has now been reprinted in July 2015. **\$30**

COTTAGES AND CAMEOS OF CLARE by WN Johnson (1988) 100pp, illus. **\$25**

JUST AS IT WAS by WN Johnson (2001) 97pp, illus. **\$20**

CLARE - A DISTRICT HISTORY by R. J. Noye (1998). Definitive history of the town and district. Includes photographs, sketches & maps. Essential starting point in Clare research. 231pp. 4th edition, with new index. **\$20 (\$15 - members)**

CLARE VALLEY, SA by Coralie Jones (2014) (A pictorial souvenir). **\$20**

CLARE SHOW "A fine all round display" for 150 years by David Bond (2014) Written to celebrate 150 years of shows in Clare. **\$33**

A History of Ngadjuri Lodge Trust by Win Johnson (2011). **\$10**

The story of Bungaree Station by Rob Linn (2011) Illus. **\$17**

FROM WHERE I SIT A Collection of articles on chosen themes written over past times by Win Johnson **\$16**

THE PATHS OF GLORY LEAD BUT TO THE GRAVE a history of Clare Cemeteries by EHH 'Clarion' Tilbrook and Miss M Tilbrook (originally published in *The Northern Argus* in 1939) **Re-released with updated index. \$20**

CLARE CAMEOS by Win Johnson (1986). 2nd ed. Includes oral histories of our older Clare residents as interviewed by Win in the State's Sesquicentennial year. **\$15**

TALKING HISTORY – Tales of Clare S.A. by R.J. (Bob) Noye (2003). 50 articles published weekly in *The Northern Argus*. **\$15**

THE CLARE I REMEMBER by J.J. 'Boss' Simons. 13 articles published in *The Northern Argus* in 1944, describing the Clare of Simons' boyhood in the 1880's and 1890's. Fully indexed. **\$15**

THE LAND HISTORY OF POLISH HILL RIVER 1842 - 1990 by William Pattullo (1991). Details the ownership history of 120 sections of land in Polish Hill River, to the edge of Mintaro township. **\$25**

CARINYA 1956 - 1989 A Peaceful and happy home Compiled by Marj. Ashby. **\$5**

THE METHODISTS OF CLARE 1851 - 1977 by Win Johnson (1994). 124pp. Indexed. **\$12**

CLARE PRESBYTERIAN CHURCH - a history 1856 - 1988 by Helen Dickeson (1993). 120pp. Includes baptisms, marriages, burials, and extensive index. **\$14**

HARD-YACKA - The story of a Mid-North town in South Australia by Julie-Ann Ellis (1995). **\$40**

JUST AS IT WAS by Winifred Johnson (2001) Tells the story of Win's life with humour and affection. 96pp including photos **\$18**

BLYTH - a silo of stories 1860 - 1990 by Win Johnson (1991). A comprehensive history of the town and district of Blyth, including family stories, farming, community and sporting activities. Excellent photographs, many in colour. **\$45**

BUNGAREE – Land, Stock & People: History of Hawker family and Bungaree Station (1992). 230pp **\$45**

MAGPIE CREEK JUNCTION a history of Brinkworth and district 1892 – 1992 (1992) **\$50**

SADDLEWORTH - Hub of the Wheel by Elinor A. Bellman (1995) **\$35**

CLARE – A BACKWARD GLANCE – by J. Haynes & E.J. Schmaal (1980) **\$8**

HEAD OF THE RIVERS – Black Springs, Manoora, Waterloo (1992) **\$25**

MARRABEL AND DISTRICT – The Legend of Curio – a history of Marrabel & district **\$25 (out of stock)**

MARRABEL & DISTRICT REVISITED – additional material of the 'early days' at Marrabel **\$25**

HILL RIVER A Valley of History by Gerald Lally (2004) **\$30**

A LANDMARK OF FAITH Church of the Immaculate Conception Mintaro and its parishioners 1856–2006 by Gerald Lally (2006) **\$35**

TIMES PAST – a pictorial history of Farrell Flat by Gerald A. Lally (2012) 194pp. **\$30**

"A WALK WITH LAUREL" a walking tour of the buildings and families of Farrell Flat from the memories of the period 1929 – 1939 by Laurel Neill (nee Mickel) (2012) **\$5**

South Clare Sports Club – Celebrating 50 years of success 1960 – 2010 by Gerald Lally et. al. (2010) **\$20**

THE INCHQUIN STORY by Jean Schmaal. **\$5**

A QUAIN COURTHOUSE by Jean Schmaal, **\$5**

CD-ROMS

HEADSTONE PHOTOS FROM LOCAL CEMETERIES (CD Rom) (2005) **\$10**



THE ANNUAL REPORTS OF ROTARY CLUB OF CLARE 1964 – 2011 (DVD) **\$20** Limited release

FEDERATION CD ROM - history of the Clare & Gilbert Valley District for all computer buffs and their friends - a great gift idea! (2002) **\$10**



CLARE REGIONAL HISTORY GROUP - CONTACT DETAILS

Postal Address: PO Box 6 Clare SA 5453
Location: Clare Town Hall (upstairs)
Phone: (08) 8842 4100 (only in opening hours)
Web: www.users.on.net/~clarehistory
Email: clarehistory@internode.on.net

OPENING HOURS

Thursdays & Fridays – 1.00– 4.00pm
 (If travelling some distance we recommend that you ring and check.)
Out of Hours Opening Fee - \$20.00

CRHG COMMITTEE

Chairman : Gerald Lally
 Secretary : Val Tilbrook
 Curator & Treasurer: Helen Perry
 Committee members: David Bond, Sue Wurst, Carolyn Semple, David Spackman, Lyn Woods.
 Newsletter Editor: Helen Perry

The committee meets bi-monthly, the AGM is held in August.

ACQUISITIONS Winter- Spring 2016

BOOKS

Calder, John W (Major) *Passed by Censor: Letters from the War*, 2009
 Penna, Rex A *Century of Field Days: a history of Yorke Peninsula Field Days*, 1995
 Cross, Jack *Two Crosses: Ephraim and Jack ~ a Proletarian History*, 2016
 Foale, Marie Therese *Never See a Need: the Sisters of St Joseph in South Australia 1866 – 2010* 2016
 Coles, Haydon *Out of Grey's Shadow: the story of John Coles* 2016
 Noble, Beryl F. *Port Broughton Uniting [Methodist] Church 1885-1985* 1985

PAPERS & Other

CRHG Clare High School: *Student Register 1921 – 1966*, 2016 (CD)
 CRHG Clare High School: *Student Register 1967 – 1984*, 2016 (CD)
 Field, Neil *'Some Letters from the Field Boys' WW1* (DVD)
 McLean, Steve *Grandpa Mac's Films* (DVD)
 Clare Rotary Club *Bulletins 2015-2016* (DVD), plus paper copy of Annual Report

Ten Queens nominate for Festival [Ref. Feb 1968]

The following girls have been sponsored by District Organisations .



Answers to puzzle on Page 2

Placenames Australia • June 2016 11

- | | | | |
|----------------|------------------|------------------|-------------------|
| 1. Mount Aaron | 6. Abraham Point | 11. Isaac River | 16. Mount Rebecca |
| 2. Judas Creek | 7. Joshua Creek | 12. Miriam Vale | 17. Rachel Creek |
| 3. Lake Adam | 8. Lake Mary | 13. Mount Sarah | 18. Jonah Bay |
| 4. Abel Gorge | 9. Lake Eve | 14. Mount Joseph | 19. Mount Deborah |
| 5. Noah Head | 10. Mount Jacob | 15. Cain Creek | 20. Mount Moses |