

# CLARE REGIONAL HISTORY GROUP

NEWSLETTER  
WINTER 2013



## A NEW CHURCH IS OPENED!

Our recent foray into the manufacture and unveiling of church interpretive markers has celebrated over 800 years of various denominational activities. Last Saturday night the 17<sup>th</sup> August heralded the opening of a church building on a new church site, for the local congregation of the Australian Christian Churches (formerly known as Assemblies of God). After some years in a former hardware site on the Main North Road, the congregation successfully sold this building to enable a plan for a purpose-built church. When suitable land in Clare was not found, the church purchased 13 acres of vineyard at Stanley Flat, just north of the racecourse. This is the first new church building to be built in or near the town since the erection of the Lutheran Church in Sabine Street in 1953. Fittingly, it is just along Stradbroke Road from the former Stanley Flat Methodist Chapel, which was built in the 1860s.

## The doors are finally open

After 18 months in construction, the new "Vine Christian Church" building has been completed and is now in use.

The new building is located on Stradbroke Road, Stanley Flat near the Clare Race Course about five kilometres north of Clare.

The "Official Opening" of the new building will be held this coming weekend beginning with a "By Invitation" event on Saturday night, August 17 from 7pm in the form of a "concert."

The Senior Pastor, Quentin Hornhardt, said this event is a chance for the church to acknowledge the many contractors and other workers who have been involved with the project.

The celebration will continue on Sunday, August 18, with a "Dedication Service" beginning at 10am.

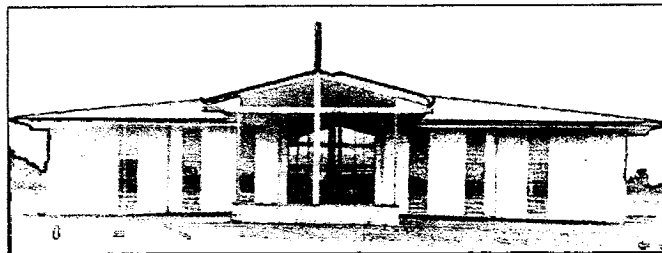
Pastor David Helyard, State President of Australian Christian Churches, will be the guest speaker at the service.

Following the "Dedication Service" the church is holding an "Open House" from 12-3pm to which the community is invited.

Pastor Hornhardt said he hoped as many people as possible would visit to have a look at the new building as the people at "The Vine" are proud of what has been achieved.

Food and drinks will be available during the "Open House" and there will be a jumping castle, face painting and fairy floss available for the children. DVDs will be shown in the auditorium.

A "Regional Youth Rally" from 6pm will wind up the weekend of celebration for members of the



The new Vine Christian Church.

Vine Christian Church.

Pastor Hornhardt said a great number of people had been involved with the planning, development and construction of the new building over an extended period and that the members of the church were very appreciative of the efforts of everybody involved as it had been a complex and at times very challenging project.

"To see the project completed and even better than many believed it would be, has been immensely rewarding and satisfying to everybody involved."

The major responsibility for the initial and ongoing design and structure of the building was vested in the church's "Building

Committee" and Pastor Hornhardt paid tribute to the hard work and many hours of meetings undertaken by this group.

Many members of the church had helped voluntarily with a lot of the smaller tasks that were not done by contractors and the help and support of these members was invaluable in completing the building.

After being without their own church building for the past five and a half years, members of The Vine Christian Church are now settling into their new home and enjoying the fruit of their collective labour.

Pastor Hornhardt said it was the desire of church members that their church be a resource for our local community.

## NEWS FROM THE GROUP

### Meetings and Events

#### CLARE REGIONAL HISTORY GROUP

Thurs 11<sup>th</sup> Oct 4pm - Committee Meeting

November – date to be set 5pm – Welcome to new and renewing members cocktail hour event

Fri 13<sup>th</sup> Dec 4pm – Committee Meeting

5pm - Christmas drinks

Fri 4<sup>th</sup> April 2014 – 30<sup>th</sup> Birthday Celebrations

### ANOTHER EVENT TO PLAN FOR

#### Caring for Collections – Clare

Wed 16<sup>th</sup> & Thurs 17<sup>th</sup> October

BJ Long Function Room, Clare Town Hall

This is a joint seminar organized by History SA and ArtLab. Local history group members and other individuals from throughout the region are invited. *Please contact Amanda James, Senior Community History Officer, History SA phone 08 8203 9874 or email [A.James@History.sa.gov.au](mailto:A.James@History.sa.gov.au)*

Admission is free due to a sponsoring grant.

### ANNUAL GENERAL MEETING

HELD 8<sup>TH</sup> AUGUST

Thanks to the 25 members who attended. Entertainment included a video of the demolition of existing shops and the construction of Target and Cheap as Chips shops on Main North Road in 2004. Credit must go to James Duggin for his foresight in recording this process. Thanks for your contribution in recording our local history, Jamie!

There was also a Powerpoint detailing the various History Group events of the last year. Both of these can be viewed at the History Collection on Thursdays and Fridays, 1-4pm.

### MEMBERSHIPS ARE NOW DUE

At the AGM held on Thurs 8 August, members voted to maintain the membership costs at the current level. These are:

Individual \$20

Family \$25

Corporate \$100

Life Member (financial) \$200

Please pay your sub promptly, to help our coffers and to ensure an invitation to our November membership event.

Our bank details are:

Name of account: Clare Regional History Group

BSB: 105 030 Account no.: 0371 04140

Please type your surname and "sub" in the Details field. Thank you from the Treasurer!

### SAVE THE DATE

#### Stanley Flat Memorial Hall

ANZAC World War 1 Centenary Celebrations –  
Sunday 27<sup>th</sup> April 2014

Assembly for Parade 10.30 am for an 11 am start.

Bands, marquee, lunch, entertainment and unveiling of monument.

### Can anyone identify this church?

This photo is in the Clare National Trust collection, identified as a local church. It closely resembles St Barnabas Anglican Church but major features (doors, windows) are different. Can anyone help with its identity?



## **CHAIRMAN'S REPORT TO THE ANNUAL GENERAL MEETING HELD AT BENTLEYS HOTEL, CLARE 8<sup>TH</sup> AUGUST 2013**

I have pleasure in presenting to you the 29<sup>th</sup> Annual Chairman's Report of the Clare Regional History Group.

We have once again had a busy 12 month period and in November, long time member and supporter, Allison Tilbrook officially unveiled the long awaited compactus which we purchased in July. To refresh your memory this was purchased by a Clare and Gilbert Valleys Council Grant of \$2,000, with the History Group making up the remainder \$3,000.

On Saturday and Sunday, 8<sup>th</sup> and 9<sup>th</sup> December after many meetings and much planning by the History Group in collaboration with Mount Horrocks Historical Society and Rhynie Improvement Committee we played hosts to the 150<sup>th</sup> anniversary of the retrieval of the remains of explorers Burke and Wills. This re-enactment cavalcade assembled at Bungaree Station, journeyed to Clare, proceeded onto Clare Showgrounds for lunch and then to Horrock's Cottage for tea and entertainment. The following day the cavalcade continued onto Rhynie where proceedings concluded.

This major event was a great achievement from the point of view of promoting history to the public, with the participation of many people whilst raising funds for the Royal Flying Doctors Service. Members of the re-enactment committee gave freely of their time and energy over many months and for this they were well rewarded by the success of this event. My thanks go to all involved in this event. Helen and Sue carried on the Burke and Wills theme in the annual Clare Christmas Parade and were successful in winning best float.

In April we celebrated our 29<sup>th</sup> birthday with a 'Show and Tell' dinner in the Barbara Long Room, which was a great success by the range of items discussed and on display.

Throughout the month of May we celebrated 'History Month' by unveiling of plaques at five church locations. This was Stage Three of our History Markers project to recognise our local heritage buildings and sites. Funding for this project was received by a grant from History SA and local parish communities, with the balance coming from our funds. I thank members who contributed to this project with research and would like to especially thank Helen for her time and enthusiasm given and to Sue who collaborated with the local church parishes. We still have the Lutheran plaque to unveil which hopefully will occur during Spring.

In June we were invited to share with the Walton family the unveiling of a plaque to commemorate where their ancestors once conducted a hotel business at Leasingham. In July we were well represented at a Mayoral Reception to recognise 160 years of Local Government in Clare and districts.

To all members of the History Group thank you for another successful year with 250 visitors and 1650 volunteer hours recorded. We continue to provide a great resource for visitors travelling to the region and to the local public, by showing a slight increase in patronage this year.

Members remain committed to the History Group. Jill continues to work on the copy camera project and has filmed thousands of pages ranging from council to school and parish records. Carol is still indexing the Northern Argus, Bill is still enjoying his cataloguing of our resources and acquisitions, Allison and Win help out where needed and when they can, Sue continues to enthuse and assist in the background, Val does a great job in her secretarial role, handling research enquires and greeting the public to our rooms and Helen does a fantastic job as curator and newsletter editor. A tremendous effort by all volunteers, my thanks to all.

As we move into another year please keep in mind that we will be celebrating our 30<sup>th</sup> year of formation and of providing assistance to the community, as they search for answers from the past. Thank you.

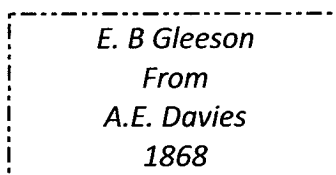
Gerald Lally, Chairman

## WHO WAS A. E. DAVIES?

The recent Mayoral Reception to celebrate 160 years of local government in our district was an opportunity to highlight photos and artefacts relating to this aspect of our heritage. The resulting photos and written history have been on display in the Clare Town Hall foyer during August.

However, there are also two very significant items at the Clare National Trust Museum which belonged to Clare's founder, Edward Burton Gleeson. Both were donated by Gleeson's great granddaughter, Miss Betty Westwood. Firstly, there is a hand-carved walnut chair brought out from India by EB Gleeson.

The other item is a silver tankard, with the engraving



E. B Gleeson  
From  
A.E. Davies  
1868

But who was AE Davies? A cursory check of early records does not shed any light – he was not born in SA, and did not marry or die here. A closer check reveals that Doctor Davies was Doctor Charles Houlton Webb's partner during 1860-65, and when he left his place was taken by Doctor Bain. They occupied consulting rooms on the site of what is now the Commonwealth Bank.<sup>1</sup> Dr Augustus Edward Davies, Clare, Surgeon, is recorded as purchasing this land, Southern Part Lot 66 (Plan 9 of Section 39, Hundred of Clare), in 1863 for £100. It was leased to the National Bank for 7 years from 1873, and sold to Robert French, Clare, bootmaker, in 1883. AE Davies is recorded as owning a number of parcels of land in the Clare Corporation assessments of 1868, 1869 and 1873. In the assessment of 1880, he is shown as the owner of ½ acre of land on the Main Street in Sections 39 and 40, comprising a bank, dwelling house, rinks and land. His address is shown as England. He also owned 8 acres in Agnes Street including a dwelling house.<sup>2</sup>

Dr Davies was instrumental in enabling the building of the first Town Hall - At the time of its opening, the SA Register' own correspondent reported that "Taking it for all in all it is a useful building, done on the most economic principles, having cost barely £1,600. There is no doubt but that we are greatly indebted to the energy of Dr Davies for his superintendence..."<sup>3</sup>

"...I am reminded that the (Clare) villagers on particular occasions, when they wanted to congregate together to discuss politics, or for an evening's entertainment found they had no suitable place wherein to assemble. A public hall was frequently mooted, but the residents wanted enterprise in that particular, and it was left for Dr. Davies to immortalise his name in connection with the early history of Clare. That gentleman suggested the formation of a company for the purpose of building a hall. The shares were taken up and a building erected in accordance with the doctor's plans, and under his superintendence. The concern proved a dead loss to the company, and it has been sold, and is now the property of the Corporation."<sup>4</sup> It was sold to the Corporation of the Town of Clare under the hammer in August 1875 for £800.<sup>5</sup>

"Dr. A.E. Davies, formerly well-known in Adelaide and in the Clare district, has died in England, where he returned 36 years ago. Old residents will well remember the genial doctor, who was Grand Master of the Freemasons. He was 84 years of age at his death, and his wife survives him."<sup>6</sup> He took a conspicuous part in the public life of St Asaph, the town in which he had resided continuously since his return to England".<sup>7</sup> This town is located in Flintshire, North Wales, 20 miles west of Chester.<sup>8</sup>

<sup>1</sup> RJ Noye, *Clare – a district history* (1974) pp 32,195

<sup>2</sup> Pattulo Land History manuscript of Hutt River Sepcial Survey of 1841.

<sup>3</sup> SA Register, 25 Aug 1866, p3C

<sup>4</sup> "Twenty Years Ago by O." (*The Northern Argus*, 14 Jan 1876, p3)

<sup>5</sup> Northern Argus, 3 Aug 1875, p3.

<sup>6</sup> *The Mail*, 3 Apr 1915, p8

<sup>7</sup> *The Chronicle*, 3 Apr 1915, p37E.

<sup>8</sup> *Gazetteer of the World* (1857) Vol.1

## THE HILL RIVER ESTATE (continued from our last newsletter)

The lands are ploughed one chain wide, and are harrowed by fifteen sets of six-leaved harrows, doing a land in two turns. The first sets are heavy and drawn by six horses, and the second, which are lighter, go across and finish. The harrowing is finished at the rate of 500 acres per day. As harvest approaches two-chain wide strips are cut by the mowing machines at intervals, cutting the wheat into 200-acre blocks, and then strips (upon the removal of the wheat for hay) are ploughed, together with strips right round the crop, for protection against fire. When the wheat is ripe, the strippers are then set to work, emptying on the roads at each end of the 200-acre blocks. Each stripper is drawn by four horses, driving and guiding being managed by one man; and each machine does from seven to eight acres per day, according to the weather. Last year twenty-seven strippers were employed, but this harvest ten additional new ones will be required. About one winnower to three strippers is required on the headlands for cleaning, which is done by piece work, the men obtaining 1d. per bushel for putting the wheat through once, and 2d. for twice.



SOWING—HILL RIVER FARM, NEAR ADELAIDE.

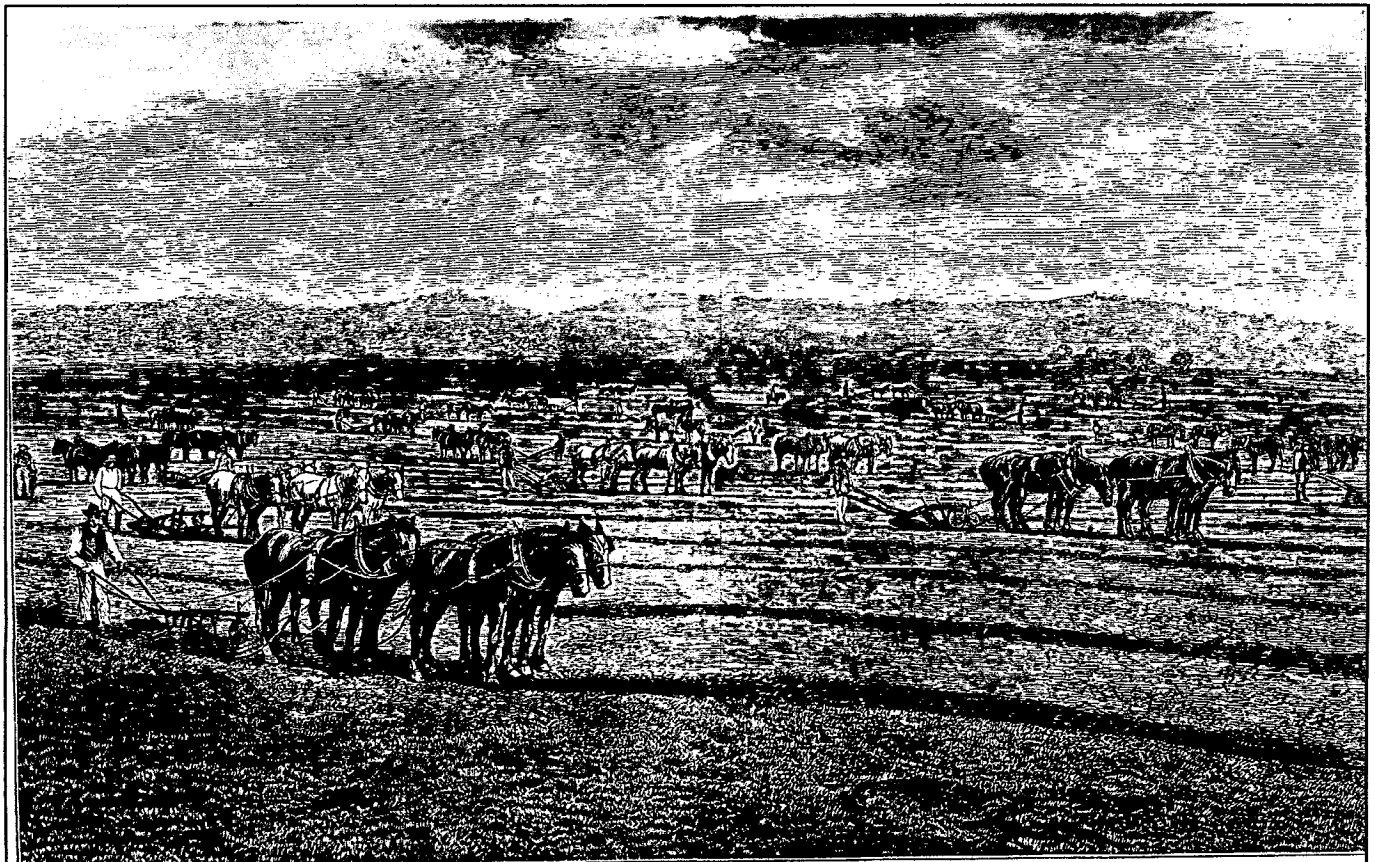
From the winnowers in the fields it is carted in bags to the blowers and screens, from which it is bagged, sewed, and passed into the barn. The land under wheat last year was 3050 acres, which yielded at the rate of fifteen bushels, thirty-five acres of peas yielding forty bushels per acre, and sixty acres of barley giving thirty bushels. The quantity of wheat cut for hay last year for home consumption was 600 tons, and this year 800 tons will be required. The wheat grown on this farm took the challenge cup, value Fifty Pounds, in Adelaide, for the best 100 bushels in 1873; the prize at the late show for the best bushel with a sample of purple straw weighing sixty-eight pounds; and the present harvest at the time of my visit promised to eclipse any former effort. At the farm steading near the home station, a similar stabling accommodation to that described exists, and as the supply of Clydesdales increases at another station of Mr. Fisher's devoted to breeding, it is proposed to increase the working capacity of the Hill River farm by two-thirds, or three steadings in all, with 200 horses each. At this steading there is another series of men's buildings, together with chaff house, With chaff-cutter, cutting one ton per hour, implement yard and sheds, containing in addition to the ploughs and strippers, harrows, and sowers, already mentioned, fourteen waggons, six scarifiers, four hay-rakes, ration carts, wagonettes, and other vehicles and implements; a blacksmith's shop containing two forges, carpenter's shop and saddler's shop for repairing, overseer's residence and a large number of cottages for the married men who permanently stay on the place. Two large dams of water supply the home station and home farmstead with water and there are six other in

## THE HILL RIVER ESTATE (continued from our last newsletter)

various part of the run. This work, which is constantly being carried on, is done by plough and scoop. Sixteen acres of trees have been planted in two-acre blocks in various parts of the run, the kind found to do best being the Tasmanian red gum. *Pinus insignis*, and *sterculias*. A large plantation of about seventy acres for trees is in course of preparation above the house, and olive planting is carried on annually. The large quantity of manure made by such a quantity of stable horses is carefully looked after, and is to be put on the land along with the lucerne. Pigs are profitably kept upon the waste wheat; and on a small experimental farm, maize, millet, and sorghum have been tried with success, and various kinds of wheats are planted in drills to try their relative merits. The purple straw so far has been found best. On one portion of the farm also experiments to prove the efficiency of subsoil ploughing and other matters are attended to. Amongst the improvements to be eventually carried out, a public reading room and library are to be added to each homestead, and other measures of an educative and elevating character are to receive attention. The hands employed, apart from shearing and harvest seasons, average about seventy. When these latter operations are on, the number is over 200. Young draught horses are constantly being brought from the breeding establishment near Adelaide, and broken by means of waggon, plough, scoop, or other of the numerous kinds of work constantly going on.

The following rules of the establishment are posted in the various buildings:-Working hours: All hands to rise at five a.m., when the bell rings; horses to be fed, watered, and cleaned; breakfast at six; all teams to be afield at seven; dinner hour at noon; work to commence again at one P.M., to continue to six in summer and five in winter; supper at seven; horses to be fed and watered at half-past eight, and the dining-room to be cleared and locked up at ten P.M. Wages: First-class men will be paid at the rate of 20s. per week; second-class at 18s.; third-class at 16s. Any one by good and industrious conduct can raise himself to the highest class. Wages paid every fourth week, and at no other time.

Any one in charge of horses neglecting to feed and tend them properly, or found abusing them, will be discharged at once, and forfeit all his wages due. Any one wilfully disobeying orders or neglecting his duty will be discharged, and will forfeit two-thirds of the wages due. Any one found in a state of drunkenness will be instantly discharged, and absolutely forfeit all wages due. Anyone bringing intoxicating liquors on the premises, as well as those partaking of them, will forfeit all the wages due, and be instantly discharged. Any one found smoking near the stables or stacks will be at once discharged and proceeded against under the Bush Fires Act. Each man at the time of hiring is required to sign the above rules, binding himself to abide by them in all respects.



BREAKING NEW GROUND.

# BOOKS FOR SALE

**A History of Ngadjuri Lodge Trust** by Win Johnson (2011) **\$10**

**The story of Bungaree Station** by Rob Linn (2011) Illus. **\$17**

**The annual reports of Rotary Club of Clare 1964 – 2011** (DVD) **\$20** Limited release

**TIMES PAST – a pictorial history of Farrell Flat** by Gerald A. Lally (2012) **\$30 194pp.**

**“A walk with Laurel” a walking tour of the buildings and families of Farrell flat from the memories of the period 1929 – 1939** by Laurel Mickel (nee Mickel) (2012) **\$5.**

**THE PATHS OF GLORY LEAD BUT TO THE GRAVE a history of Clare Cemeteries** by EHH ‘Clarion’ Tilbrook and Miss M Tilbrook (originally published in *The Northern Argus* in 1939) **Re-released with updated index \$20.00**

**CLARE CAMEOS** by Win Johnson (1986). 2<sup>nd</sup> ed. Includes oral histories of our older Clare residents as interviewed by Win in the State’s Sesquicentennial year. **\$15.00**

**TALKING HISTORY – Tales of Clare S.A.** by R.J. (Bob) Noye (2003). 50 articles published weekly in *The Northern Argus*. **\$15.00 (\$12.00 members)**

**THE CLARE I REMEMBER** by J.J. ‘Boss’ Simons. 13 articles published in *The Northern Argus* in 1944, describing the Clare of Simons’ boyhood in the 1880’s and 1890’s. Fully indexed. **\$15.00**

**THE LAND HISTORY OF POLISH HILL RIVER 1842 - 1990** by William Pattullo (1991). Details the ownership history of 120 sections of land in Polish Hill River, to the edge of Mintaro township. **\$25.00**

**CARINYA 1956 - 1989 A Peaceful and happy home** Compiled by Marj. Ashby. **\$5.00**

**THE METHODISTS OF CLARE 1851 - 1977** by Win Johnson (1994). 124pp. Indexed. **\$12.00**

**CLARE PRESBYTERIAN CHURCH - a history 1856 - 1988** by Helen Dickeson (1993). 120pp. Includes baptisms, marriages, burials, and extensive index. **\$14**

**HARD-YACKA - The story of a Mid-North town in South Australia** by Julie-Ann Ellis (1995). **\$40.00**

**MAGPIE CREEK JUNCTION a history of Brinkworth and district 1892 - 1992** (1992). Compiled by Brinkworth Centenary Book Committee. 233pp. **\$40.00**

**JUST AS IT WAS** by Winifred Johnson (2001) Tells the story of Win’s life with humour & affection. 96pp including photos **\$18.00**

**BLYTH - a silo of stories 1860 - 1990** by Win Johnson (1991). A comprehensive history of the town and district of Blyth, including family stories, farming, community and sporting activities. Excellent photographs, many in colour. **\$45.00**

**CLARE - A DISTRICT HISTORY** by R. J. Noye (1998).

Definitive history of the town and district. Includes photographs, sketches & maps. Essential starting point in Clare research. 231pp. 4th edition, with new index.

**\$20.00 (\$15 - members)**

**BUNGAREE – Land, Stock & People: History of Hawker family and Bungaree Station** (1992). 230pp **\$45.00**

**CLARE PRIMARY SCHOOL 1879–2004** by Ro Wood & 125<sup>TH</sup> Committee (2004) **\$10.00**

**SADDLEWORTH - Hub of the Wheel** by Elinor A. Bellman (1995) **\$35.00**

**CLARE – A BACKWARD GLANCE –** by J. Haynes & E.J. Schmaal (1980) **\$8.00 (Recently reprinted)**

**HEAD OF THE RIVERS – Black Springs, Manoora, Waterloo** (1992) **\$25.00**

**MARRABEL AND DISTRICT – The Legend of Curio – a history of Marrabel & district** **\$25.00**

**MARRABEL & DISTRICT REVISITED –** additional material of the ‘early days’ at Marrabel **\$25.00**

**HILL RIVER A Valley of History** by Gerald Lally (2004) **\$30**

**A LANDMARK OF FAITH Church of the Immaculate Conception Mintaro and its parishioners 1856–2006** by Gerald Lally (2006) **\$30.00**

**FROM WHERE I SIT** A Collection of articles on chosen themes written over past times by Win Johnson **\$16.00**

**South Clare Sports Club – Celebrating 50 years of success 1960 – 2010** by Gerald Lally et. Al. (2010) **\$20**

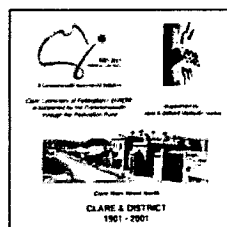
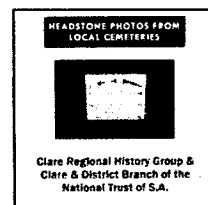
**THE INCHQUIN STORY** by Jean Schmaal. **\$4**

**A QUAIN COURT HOUSE** by Jean Schmaal, **\$4.**

\*\*\*\*\*

## CD-ROMS

**HEADSTONE PHOTOS FROM LOCAL CEMETERIES (CD Rom)** (2005) **\$10.00**



**FEDERATION CD ROM - history of the Clare & Gilbert Valley District** for all computer buffs and their friends - a great gift idea! (2002) **Special price \$10.00 (\$15 for 2)**

## CLARE REGIONAL HISTORY GROUP - CONTACT DETAILS

**Postal Address** – PO Box 6 Clare SA 5453  
**Location** – Clare Town Hall (upstairs)  
**Phone** (08) 8842 4100 (only in opening hours)  
**Web:** [www. users.on.net/~clare history](http://www.users.on.net/~clare%20history)  
**Email:** [clarehistory@internode.on.net](mailto:clarehistory@internode.on.net)  
**OPENING HOURS** (these have recently changed)  
Thursdays & Fridays – 1.00– 4.00pm  
(If travelling some distance it is wise to ring and check.)  
**Out of Hours Opening Fee - \$20.00**

### ACQUISITIONS Winter 2013

#### **BOOKS**

Martin, Rick & Hicks, Peter *Maggie Fly Over*, 1986

Laut, P, et al *Environments of South Australia: Province 4 Eyre and Yorke Peninsulas*, 1977

Cannon, Michael *The Exploration of Australia*, 1987

Sayer, Max *Jack Babbage's Appila: A pictorial history of 20th century Appila featuring photographs by, and from the collection of, Jack Babbage*, 2013

Smailes, Peter J. & Hugo, G.J. *Forecasts of Population Development in Small Country Towns: Some examples from South Australia*, c1981

*Smailes, Peter J. The Support Base and Performance of Small Towns in the South Australian Wheat Belt*, 1973

Howell, Elizabeth *Hugh Ness and his sons in Scotland and Australia*, 2012

#### **PAPERS & Other**

PIRSA *Geological Monuments in South Australia*, 2008

### **TOURIST BUREAU**

(From *The Northern Argus*, 23 March 1928, p5G)

Mr VH Ryan, Director of the South Australian Tourist Bureau, visited Clare last week, and after being motored round to see the beauty spots of the district, he met the members of the local branch of the bureau at the Town Hall. There were present the Mayor (Mr J Bails), and Messrs. AE Smith, PT Brebner, AC Jeffrey, WH Childs, R Bentley and H Siney. The Mayor extended a hearty welcome to Mr Ryan, who after acknowledging the same said that after having been around the district, he was more than ever convinced that Clare should have the local tourist bureau run on the coupon system from the central bureau. He outlined a scheme for an eight days' tour. The requirements mainly necessary were accommodation and transport, which he was now convinced were both available. His correspondence with the local bureau on Dec. 13 gave the required information for the committee's assistance in drawing up a suggested programme. The committee could gain publicity by issuing a folder or pamphlet, describing the attractions of the district. Consideration of this matter was postponed until a later date. Mr Ryan offered to send the Government photographer for a few days, if the committee would drive him around the district, and also the use of a tourist bureau window for the display of produce and views of the district. This offer was accepted. The matter of accommodation to be further gone into and Mr Ryan advised.

